



**India Meteorological Department
(Ministry of Earth Sciences)**

NATIONAL BULLETIN NO. 36 (BOB/04/2023)

TIME OF ISSUE: 0420 HOURS IST

DATED: 25.10.2023

FROM: INDIA METEOROLOGICAL DEPARTMENT (FAX NO. 24643965/24699216/24623220)

TO: CONTROL ROOM, NDM, MINISTRY OF HOME AFFAIRS (FAX.NO. 23093750)

CONTROL ROOM NDMA (FAX.NO. 26701729)

CABINET SECRETARIAT (FAX.NO.23012284, 23018638)

PS TO HON'BLE MINISTER FOR S & T AND EARTH SCIENCES (FAX NO.23316745)

SECRETARY, MOES (FAX NO. 24629777)

H.Q. (INTEGRATED DEFENCE STAFF AND CDS) (FAX NO. 23005137/23005147)

DIRECTOR GENERAL, DOORDARSHAN (23385843)

DIRECTOR GENERAL, AIR (23421105, 23421219)

PIB MOES (FAX NO. 23389042)

UNI (FAX NO. 23355841)

D.G. NATIONAL DISASTER RESPONSE FORCE (NDRF) (FAX NO. 26105912, 2436 3260)

DIRECTOR, PUNCTUALITY, INDIAN RAILWAYS (FAX NO. 23388503)

ADMINISTRATOR, LAKSHADWEEP ISLANDS (FAX NO. 0413-262184)

CHIEF SECRETARY, KERALA (FAX NO. 0471-2327176)

CHIEF SECRETARY, KARNATAKA (FAX NO. 080-22258913)

CHIEF SECRETARY, GOA (FAX NO. 0832-2415201)

CHIEF SECRETARY, MAHARASHTRA (FAX NO. 022- 22028594)

CHIEF SECRETARY, GUJARAT (FAX NO. 079-23250305)

CHIEF SECRETARY, DAMAN & DIU (FAX NO. 0260-2230775)

CHIEF SECRETARY, DADRA & NAGAR HAVELI (FAX NO. 0260-2645466)

CHIEF SECRETARY, ODISHA (FAX NO. 0674-2536660)

CHIEF SECRETARY, WEST BENGAL (FAX NO. 033-22144328)

CHIEF SECRETARY, ANDHRA PRADESH (FAX NO. 0863-2441029, 08645-246600)

CHIEF SECRETARY, TAMIL NADU (FAX NO 044-25672304)

CHIEF SECRETARY, PUDUCHERRY (FAX NO 0413-2334145)

CHIEF SECRETARY, GOVT. OF TRIPURA (FAX NO. 0381-2414013, 2413200)

CHIEF SECRETARY, GOVT. OF MIZORAM (FAX NO. 0389-2322745, 2320588)

CHIEF SECRETARY, GOVT. OF MANIPUR (FAX NO. 0385-2452629)

CHIEF SECRETARY, GOVT. OF NAGALAND (FAX NO. 0370-2270057)

ADMINISTRATOR, ANDAMAN & NICOBAR ISLANDS (FAX NO. 03192- 232656)

Sub: Severe Cyclonic Storm "Hphoon" (pronounced as Hphoon) weakened into a Cyclonic Storm and crossed Bangladesh coast

The Severe Cyclonic Storm "Hphoon" (pronounced as Hphoon) over Northeast Bay of Bengal moved nearly northeastwards with a speed of 17 kmph during past 6 hours, weakened into a Cyclonic Storm and crossed Bangladesh coast to the south of Chittagong near latitude 21.9°N and longitude 91.9°E between 0130 hours IST & 0230 hours IST of 25th October as a Cyclonic Storm with wind speed of 75-85 kmph gusting to 95 kmph. It lay centered at 0230 hours IST of 25th October over coastal Bangladesh near latitude 22.0°N and longitude 92.0°E, about 180 km east of Khepupara (Bangladesh) and 40 km south-southeast of Chittagong (Bangladesh).

It is very likely to move northeastwards and weaken into a deep depression during next 06 hours and further into a depression during subsequent 06 hours.

Forecast track and intensity are given below:

Date/Time (IST)	Position (Lat. °N/ long. °E)	Maximum sustained surface wind speed (Kmph)	Category of cyclonic disturbance
25.10.23/0230	22.0/92.0	70-80 gusting to 90	Cyclonic Storm
25.10.23/0530	22.2/92.2	65-75 gusting to 85	Cyclonic Storm
25.10.23/1130	22.8/92.7	50-60 gusting to 70	Deep Depression
25.10.23/1730	23.4/93.2	35-45 gusting to 55	Depression

Warnings:

(i) Rainfall Warning:

Manipur, Mizoram & Tripura and south Assam & Meghalaya: Light to moderate rainfall is very likely at many places with isolated heavy rainfall over Mizoram on 25th October. Light to moderate rainfall is likely at many places over Mizoram and Tripura on 26th October.

Light to moderate rainfall is very likely at many places over Nagaland, Manipur and east Arunachal Pradesh on 25th & 26th October.

(ii) Wind warning (warning graphics enclosed):

• **Northeast Bay of Bengal:**

Gale wind speed reaching **70-80 kmph gusting to 90 kmph** is prevailing and likely to decrease gradually becoming **Squally wind** speed reaching **50-60 kmph gusting to 70 kmph** by 25th noon and would decrease thereafter.

• **Northwest Bay of Bengal:**

Squally wind speed reaching **40-50 kmph gusting to 60 kmph** is prevailing and likely to continue during next 06 hours and decrease thereafter.

Adjoining eastcentral Bay of Bengal: **Squally wind** speed reaching **50-60 kmph gusting to 70 kmph** is prevailing and likely to continue during next 06 hours and decrease thereafter.

• **Along & off West Bengal, Bangladesh and north Myanmar coasts:**

Squally wind speed reaching **30-40 kmph gusting to 50 kmph** is likely to prevail along & off West Bengal coast till 25th morning.

Gale wind speed reaching **70-80 kmph gusting to 90 kmph** is prevailing along & off Bangladesh and adjoining north Myanmar coast and likely to decrease gradually become **squally wind** speed reaching **40-50 kmph gusting to 60 kmph** by 25th noon and would decrease further thereafter.

Squally wind speed reaching **55-65 kmph gusting to 75 kmph** likely along & off remaining parts of north Myanmar coast during the same period and decrease thereafter.

Mizoram, Tripura, south Assam and Manipur:

Squally wind speed reaching **30-40 kmph gusting to 50 kmph** is likely to prevail over Mizoram and Tripura and Strong wind speed reaching **25-35 kmph gusting to 45 kmph** over south Assam & Manipur on 25th October.

(iii) Sea Condition

• **Northeast Bay of Bengal and along & off Bangladesh & adjoining north Myanmar coasts:** **High sea conditions** are prevailing and likely to continue during next 06 hours and would become **very rough to rough** thereafter for subsequent 12 hours.

• **Northwest Bay of Bengal:**

Very rough sea conditions are prevailing and likely to become **rough** from 25th morning for subsequent 06 hours.

- **Adjoining eastcentral Bay of Bengal: Very rough to rough** sea condition is likely to prevail during next 06 hours and become **rough** thereafter for subsequent 6 hours.
- **Along & off West Bengal coasts: rough sea** conditions is likely to prevail during next 06 hours.

(iv) Fishermen Warning (Graphics attached):

Fishermen are advised not to venture into

- ❖ **Northeast Bay of Bengal and along & off Bangladesh & north Myanmar coasts** till 25th October.
- ❖ **Adjoining areas of northwest Bay of Bengal, along & off West Bengal coast and Eastcentral Bay of Bengal** till 25th October noon.

System is under continuous surveillance and the next bulletin will be issued at 0830 hours IST of 25th October, 2023.

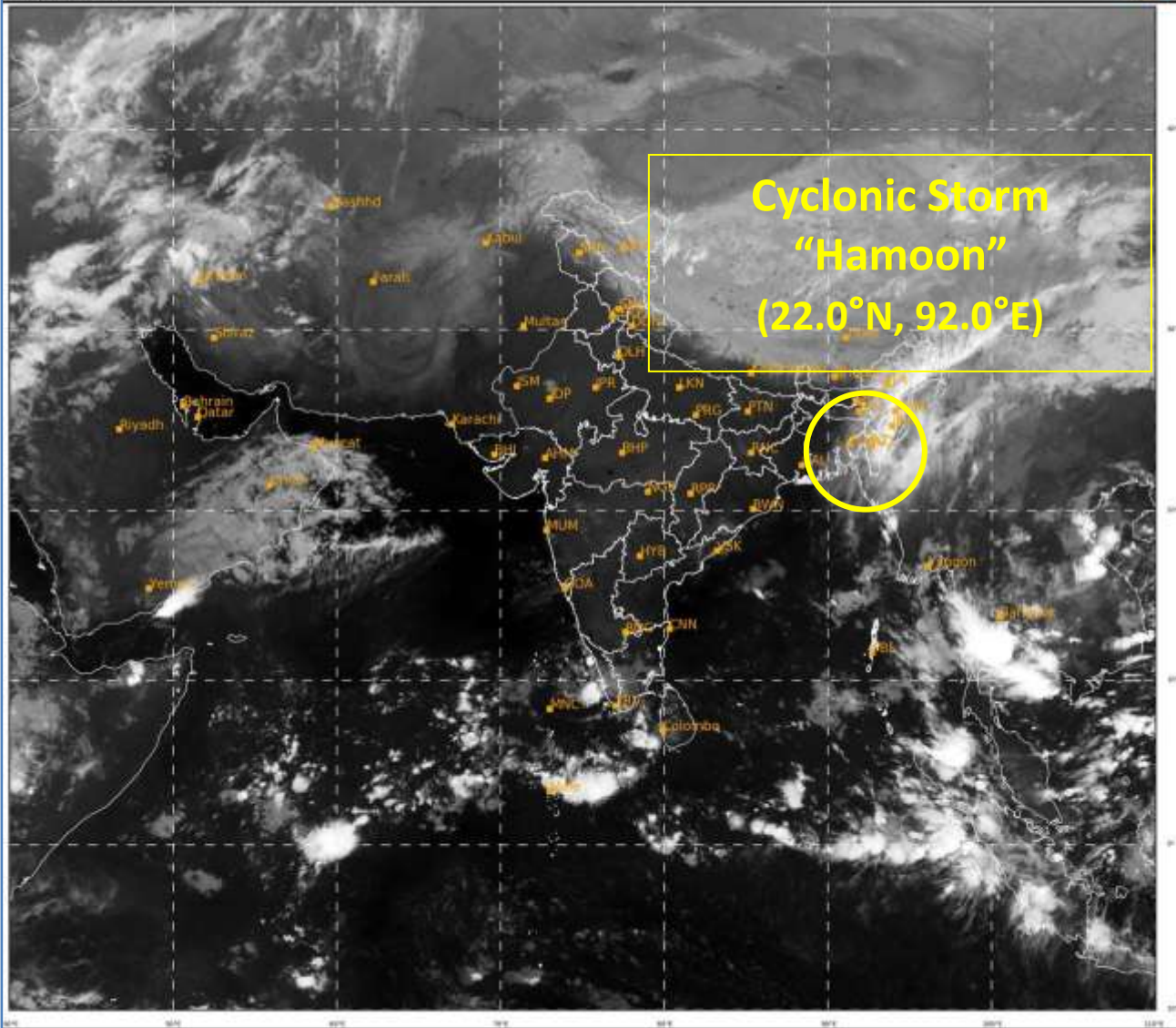
**(Shobhit Katiyar)
Scientist D, Cyclone Warning Division, New Delhi**

Copy to: ACWC Mumbai/ ACWC Chennai/ ACWC Kolkata/CWC Ahmedabad/CWC Bhubaneswar/CWC Vishakhapatnam/CWC Thiruvananthapuram/MC Goa

Spatial rainfall distribution: Isolated: <25%, A few: 26-50%, Many: 51-75%, Most: 76-100%
Rainfall amount (mm): Heavy rain: 64.5 – 115.5, Very heavy rain: 115.6 – 204.4, Extremely heavy rain: 204.5 or more.

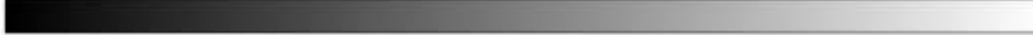
SAT : INSAT-3D IMG
IMC_TIR1 10.8 um
LIC Mercator

24-10-2023/(2200 to 2226) GMT
25-10-2023/(0330 to 0356) IST



549

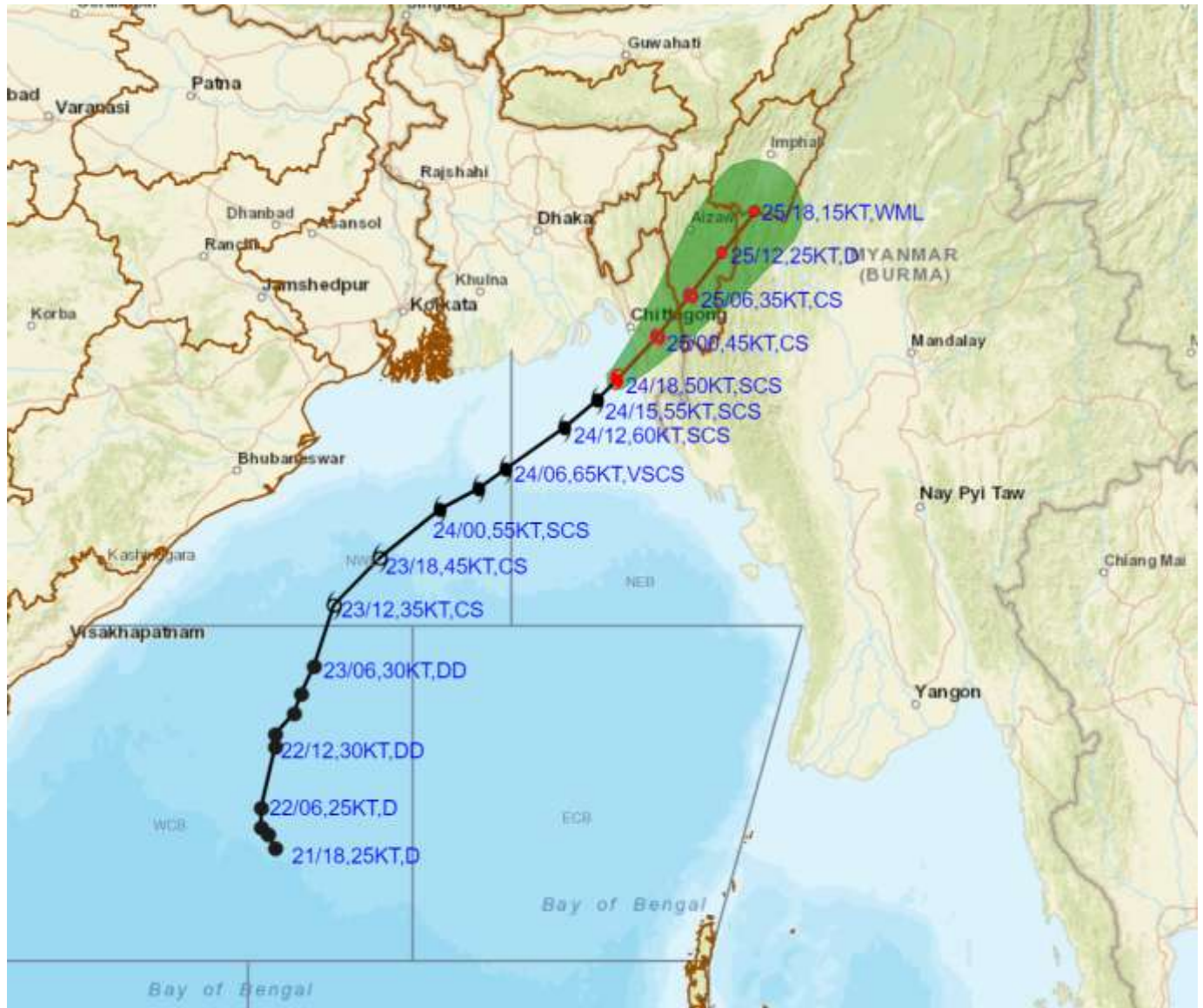
942



IMD, DELHI



OBSERVED AND FORECAST TRACK ALONGWITH CONE OF UNCERTAINTY OF SEVERE CYCLONIC STORM "HAMOON" OVER NORTHEAST BAY OF BENGAL BASED ON 1800 UTC (2330 IST) OF 24TH OCTOBER 2023.



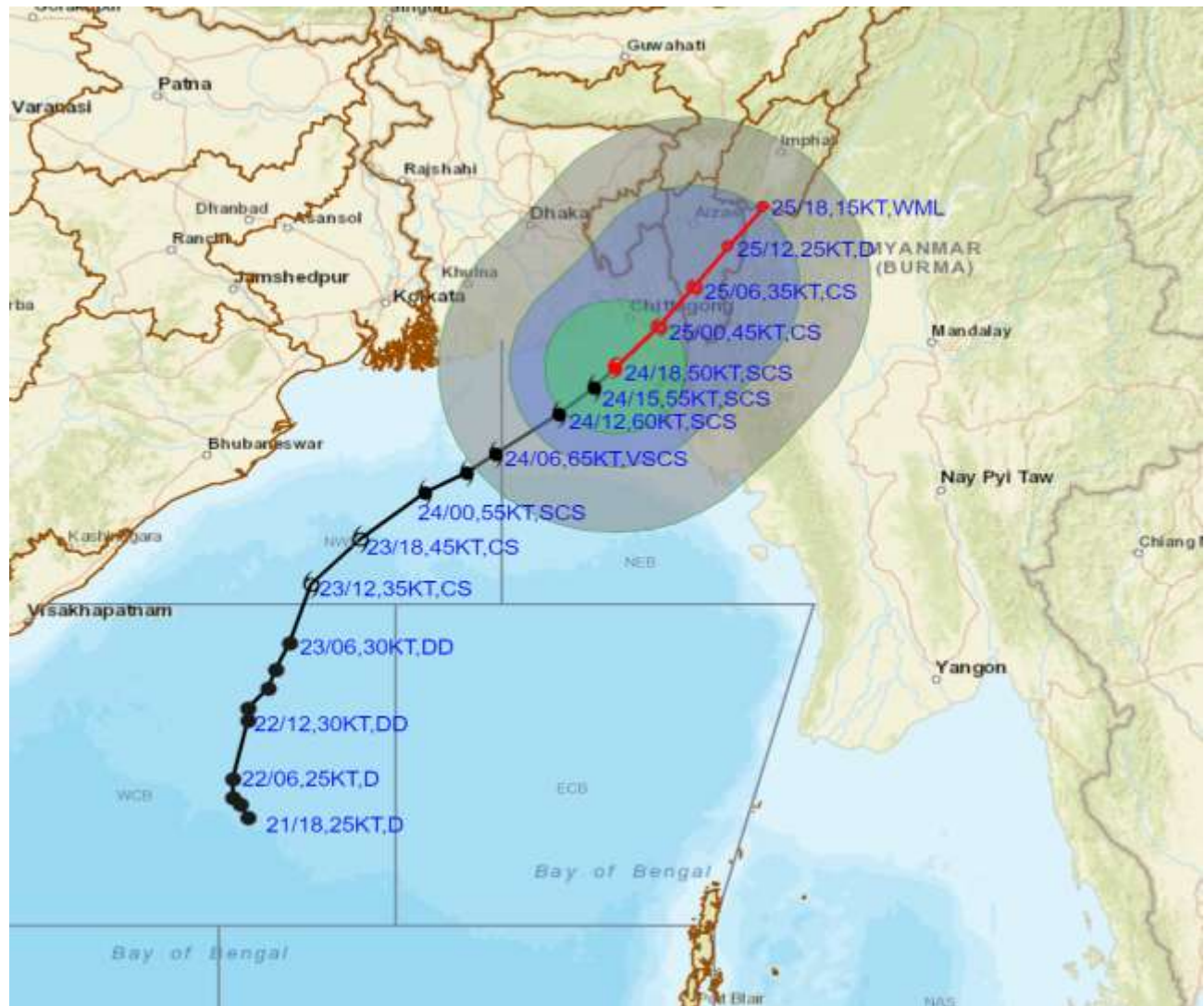
DATE/TIME IN UTC
 IST=UTC + 0530
 L: LOW PRESSURE AREA
 WML: WELL MARKED LOW PRESSURE AREA
 D: DEPRESSION (17-27 KT)
 DD: DEEP DEPRESSION (28-33 KT)
 CS: CYCLONIC STORM (34-47 KT)
 SCS: SEVERE CYCLONIC STORM (48-63KT)
 VSCS: VERY SEVERE CYCLONIC STORM (64-89 KT)
 ESCS: EXTREMELY SEVERE CYCLONIC STORM (90-119 KT)
 SuCS: SUPER CYCLONIC STORM (\geq 120 KT)

- LESS THAN 34 KT
- 34-47 KT
- \geq 48 KT
- OBSERVED TRACK
- FORECAST TRACK
- CONE OF UNCERTAINTY

Forecast	DISTANCE(KM) AND DIRECTION FROM STATIONS			
Date and Time	PARADIP (CWR)	DIGHA	KHEPUPARA	CHITTAGONG (AMBAGAN)
25.10.23/1800	830, ENE	690, ENE	420, ENE	270, NE



OBSERVED AND FORECAST TRACK ALONGWITH QUADRANT WIND DISTRIBUTION OF SEVERE CYCLONIC STORM "HAMOON" OVER NORTHEAST BAY OF BENGAL BASED ON 1800 UTC (2330 IST) OF 24TH OCTOBER 2023.



DATE/TIME IN UTC

IST=UTC + 0530

L: LOW PRESSURE AREA

WML: WELL MARKED LOW PRESSURE AREA

D: DEPRESSION (17-27 KT)

DD: DEEP DEPRESSION (28-33 KT)

CS: CYCLONIC STORM (34-47 KT)

SCS: SEVERE CYCLONIC STORM (48-63KT)

VSCS: VERY SEVERE CYCLONIC STORM (64-89 KT)

ESCS: EXTREMELY SEVERE CYCLONIC STORM (90-119 KT)

SuCS: SUPER CYCLONIC STORM (≥20 KT)

● LESS THAN 34 KT

○ 34-47 KT

● ≥ 48 KT

— OBSERVED TRACK

— FORECAST TRACK

▲ CONE OF UNCERTAINTY

AREA OF MAXIMUM SUSTAINED WIND SPEED:

■ 28-33 KT (52-61 KMPH)

■ 34-49 KT (62-91 KMPH)

■ 50-63 KT (92-117 KMPH)

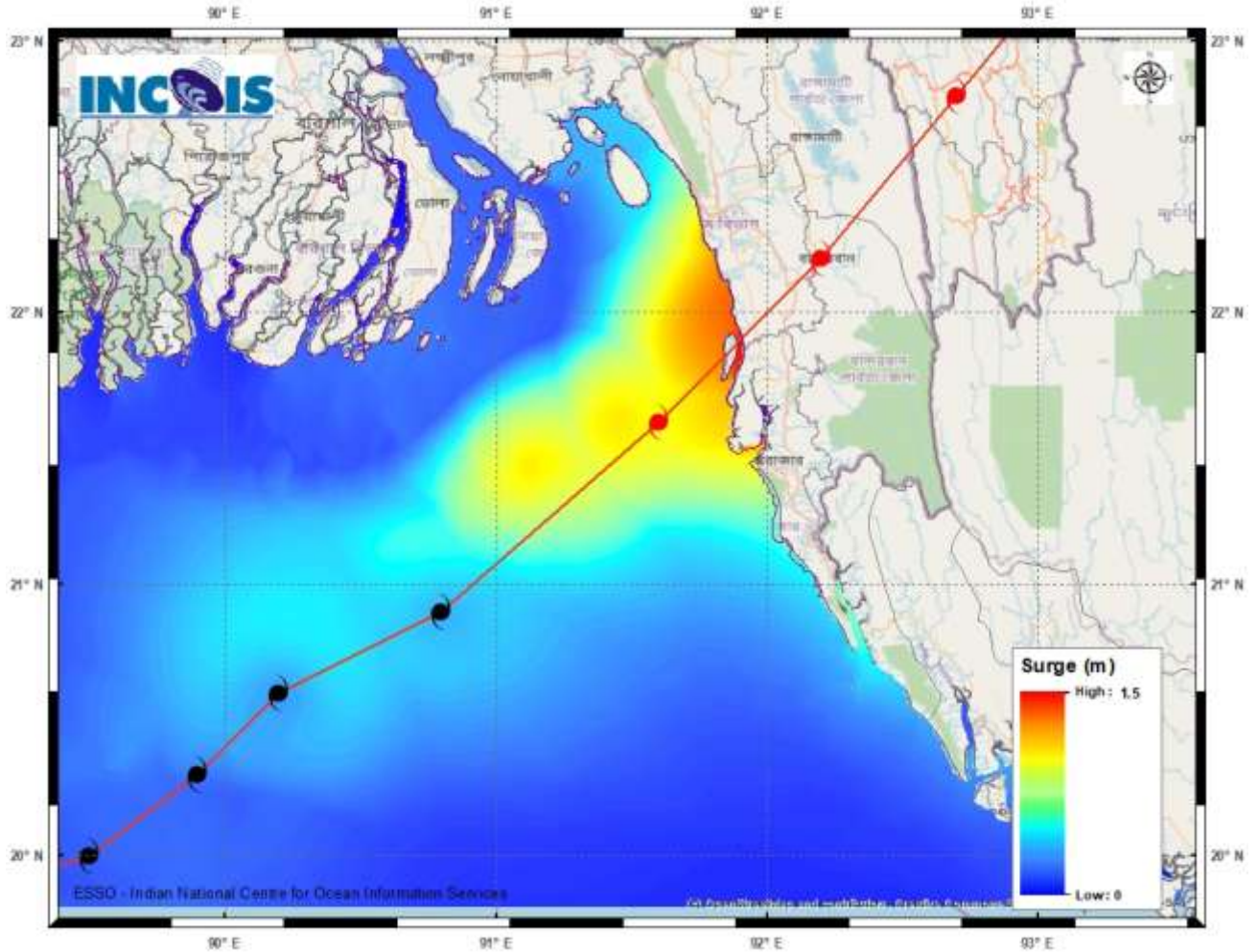
■ ≥ 64 KT (≥118 KMPH)

IMPACT OVER THE SEA

MSW (knot/kmph)	Impact	Action
28-33 (52-61)	Very rough seas	Total suspension of fishing operations
34-49 (62-91)	High to very high seas	Total suspension of fishing operations
50-63 (92-117)	Very high seas	Total suspension of fishing operations
≥ 64 (≥118)	Phenomenal	Total suspension of fishing operations

STORM SURGE GUIDANCE FOR BANGLADESH:

Storm surge of about 1.0-1.5 metre height above the astronomical tide is likely to inundate low lying areas between Khepupara and Chittagong (Bangladesh) around the time of landfall.



Fishermen warning graphics

Day 1: 24.10.2023/20:30PM to 25.10.2023/05:30AM



Day 2: 25.10.2023/05:30AM to 26.10.2023/05:30AM



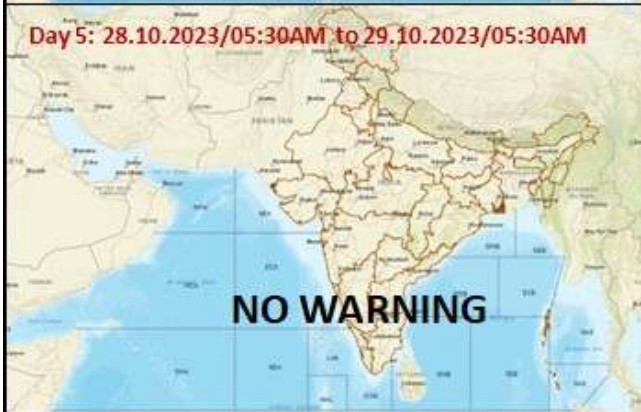
Day 3: 26.10.2023/05:30AM to 27.10.2023/05:30AM



Day 4: 27.10.2023/05:30AM to 28.10.2023/05:30AM



Day 5: 28.10.2023/05:30AM to 29.10.2023/05:30AM



Squally WX with wind speed 40-45 kmph gusting to 55 kmph

Squally WX with wind speed 45-55 kmph gusting to 65 kmph

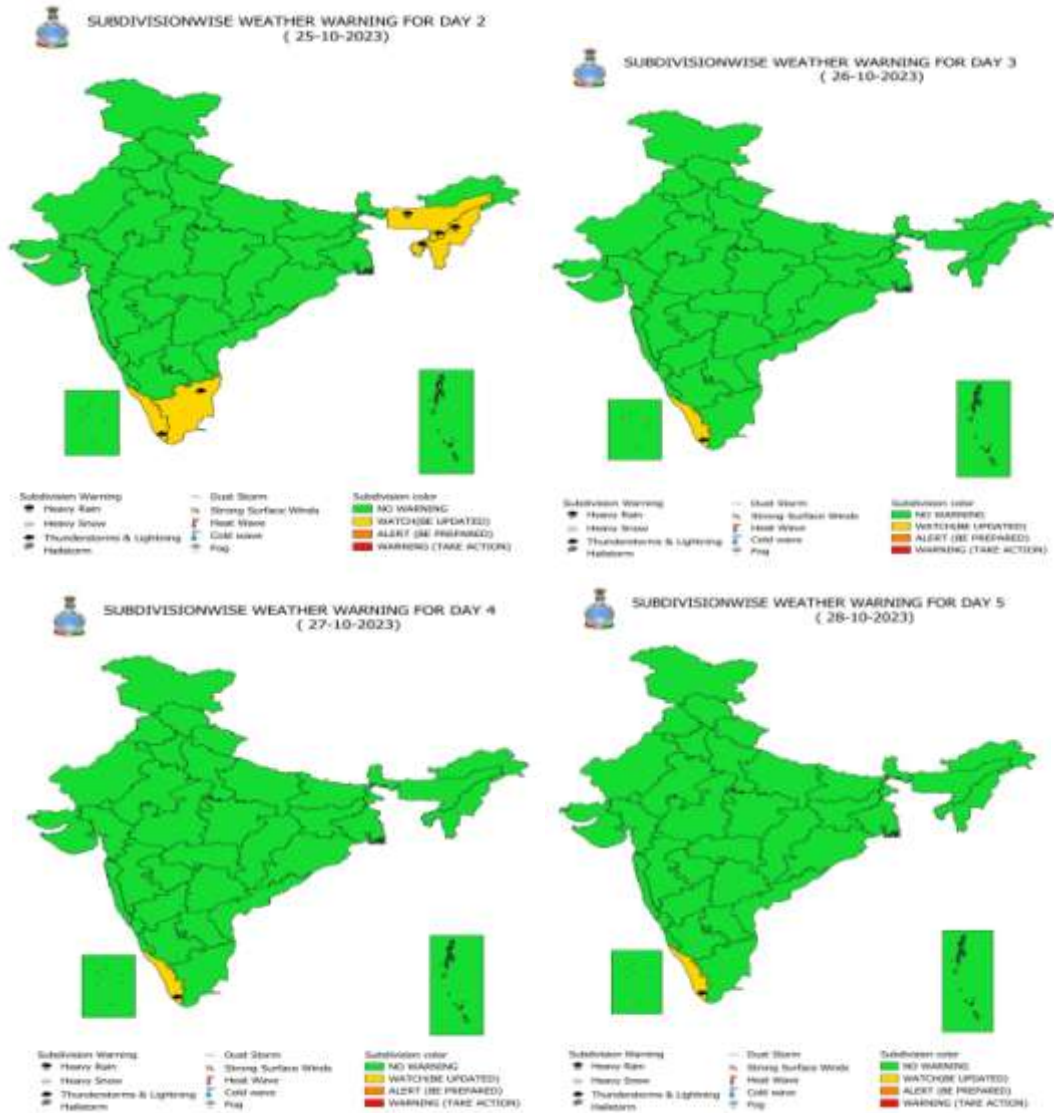
Squally wind with speed 50-60 kmph gusting to 70 kmph

CS with Gale wind speed 60-90 kmph gusting to 110 kmph

SCS with Gale wind speed 90-110 kmph gusting to 120 kmph

Fishermen are advised not to venture into the marked areas.

WEATHER WARNING GRAPHICS



- WATCH(BE UPDATED)
- ALERT (BE PREPARED)
- WARNING (TAKE ACTION)